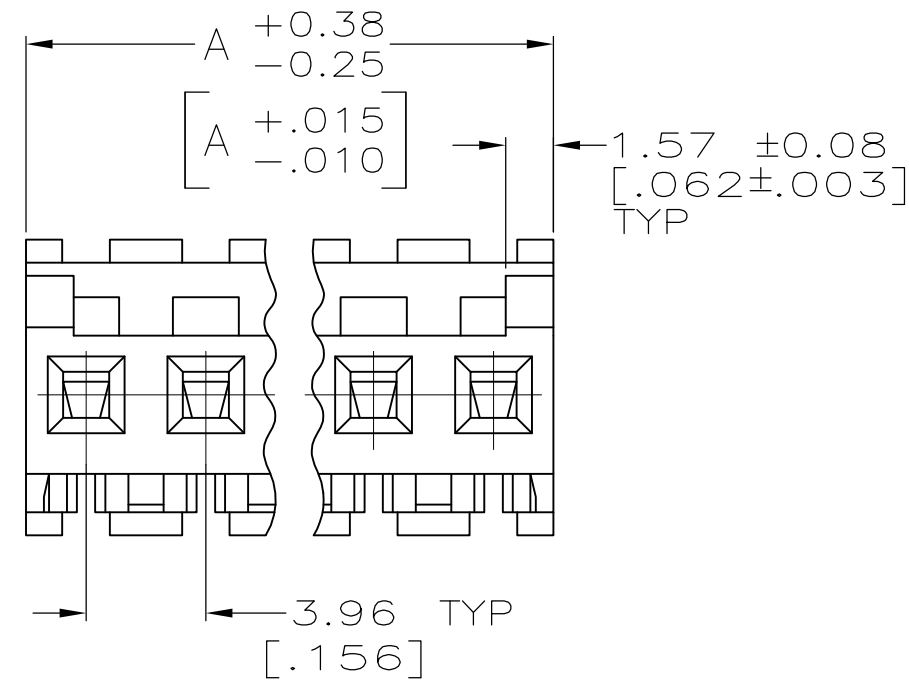
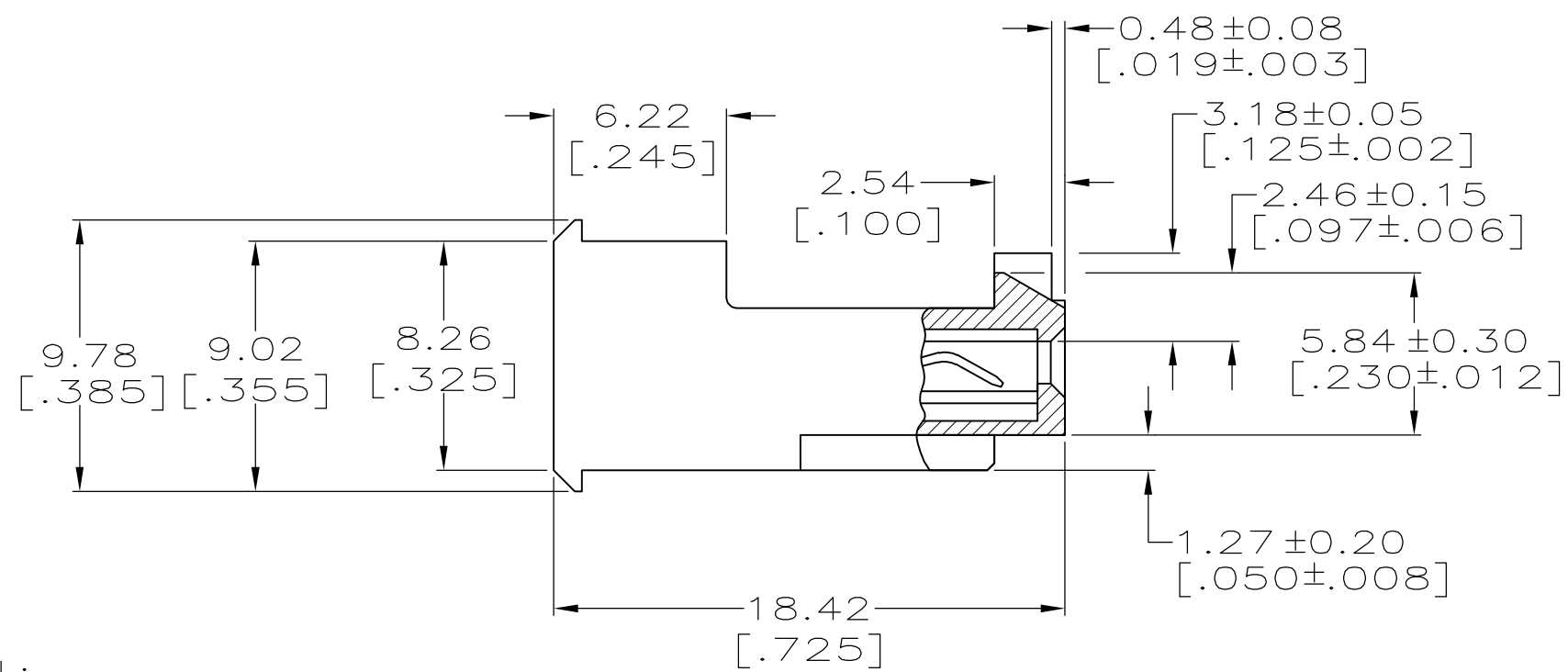
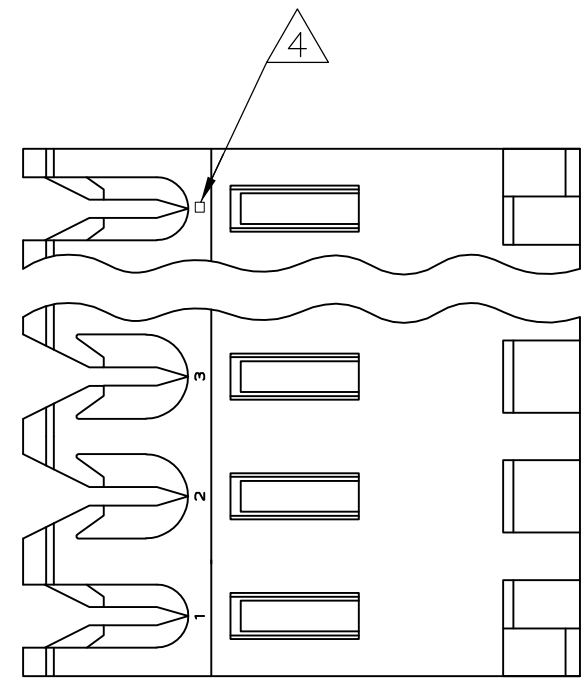


THIS DRAWING IS UNPUBLISHED. RELEASED FOR PUBLICATION
 © COPYRIGHT BY TYCO ELECTRONICS CORPORATION. ALL RIGHTS RESERVED.

LOC	DIST	REVISIONS			
P	LTR	DESCRIPTION	DATE	DWN	APVD
CM	0	B	ECO-07-012881	21JUN07	KW DB



1 MATERIAL:
 CONNECTOR - NYLON UL94V-2 (RED).
 CONTACTS - 0.30[.012] THICK COPPER ALLOY.
 PLATING - 0.00038[.000015] GOLD IN CONTACT AREA.
 0.00203[.000080] MIN THICKNESS BRIGHT TIN-LEAD IN SLOT AREA FOR 647496-2 THRU 2-647496-4 OR MATTE WHISKER MITIGATED TIN IN SLOT AREA FOR 3-647496-2 THRU 5-647496-4 OVER NICKEL UNDERPLATE.

- 2. CONTACTS ACCEPT 22 AWG WIRE WITH 2.41[.095] MAX INSULATION DIAMETER.
- 3. CONTACTS MUST ACCEPT 1.14±0.03[.045±.001] SQUARE POST AND REMAIN LOCKED IN POSITION.

4 IDENTIFICATION NUMBER FOR LAST CIRCUIT MAY NOT APPEAR ON ALL ASSEMBLIES.

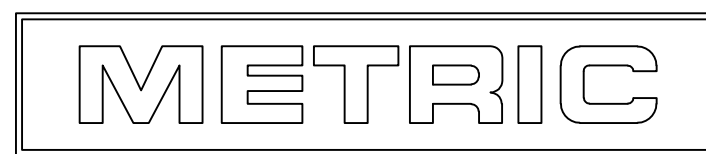
5. DIMENSIONS IN BRACKETS ARE IN INCHES.

6. HOUSING FEATURES ARE: FEED-THRU WITH LOCKING RAMP AND POLARIZING TAB.

NOTE DELETED.

NOTE DELETED.

CONTACT FINISH	DIM A	NO OF CIRCUITS	PART NO
TIN	47.55 [1.872]	12	4-647496-2
	43.59 [1.716]	11	4-647496-1
	39.62 [1.560]	10	4-647496-0
	35.66 [1.404]	9	3-647496-9
	31.70 [1.248]	8	3-647496-8
	27.74 [1.092]	7	3-647496-7
	23.77 [.936]	6	3-647496-6
	19.81 [.780]	5	3-647496-5
	15.85 [.624]	4	3-647496-4
	11.89 [.468]	3	3-647496-3
	7.92 [.312]	2	3-647496-2
	TIN-LEAD	47.55 [1.872]	12
43.59 [1.716]		11	1-647496-1
39.62 [1.560]		10	1-647496-0
35.66 [1.404]		9	647496-9
31.70 [1.248]		8	647496-8
27.74 [1.092]		7	647496-7
23.77 [.936]		6	647496-6
19.81 [.780]		5	647496-5
15.85 [.624]		4	647496-4
11.89 [.468]		3	647496-3
7.92 [.312]		2	647496-2



THIS DRAWING IS A CONTROLLED DOCUMENT.

DWN: K. WHITAKER 08-MAY-2001
 CHK: D. BOSSI 08-MAY-2001
 APVD: D. BOSSI 08-MAY-2001

Tyco Electronics Corporation
 Harrisburg, Pa 17105-3608

NAME: MTA-156 CONNECTOR ASSEMBLY, 22 AWG, STANDARD

PRODUCT SPEC: 108-1051
 APPLICATION SPEC: 114-1020

SIZE: A2 CAGE CODE: 00779 DRAWING NO: C=647496 RESTRICTED TO: -

WEIGHT: - SCALE: 4:1 SHEET: 1 OF 1 REV: B

CUSTOMER DRAWING